

ICONIC
TINY HOMES

ARNHEM



[ICONICTINYHOMES.COM.AU](https://iconictinyhomes.com.au)



THE ARNHEM

The ultimate combination of simplicity and functionality.

Sleeps

x1 Queen Bed
x1 Daybed

Dimensions

8.0m Length
2.4m Width
4.3m Height

Price Guide

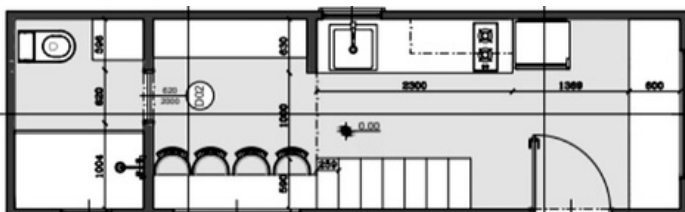
Starting price
\$135,000

Build Time

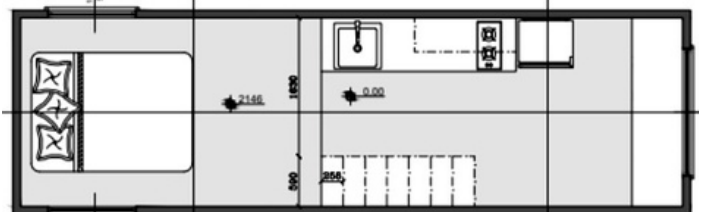
5 - 7
Weeks

In the Arnhem, you can find all the modern comforts that you would normally find in your own home. Our models are suitable for singles, couples and even families with children. Living tiny is about lifestyle. A lifestyle of spending more time outdoors and escaping the concrete jungles of today in a sustainable and minimalistic way.

Ground Floor



Loft Floor





FEATURES



Structure

- Tri-Axle 8.0m X 2.4m trailer with stabilisers and electric brakes rated to 4.5 ton
- Trucore engineered steel frame
- STRUCTAFLOOR yellow tongue + underfloor insulation
- Earthwool R-2.5 sound shield insulation

Internal

- Easycraft EasyVJ MDF lining to walls and ceiling
- Oak timber laminate flooring
- Porta Contours Tasmanian Oak feature walls
- Fully painted, Dulux White on White



External

- Colorbond steel roof cladding
- Aluminium low E-Glass doors & windows
- Colorbond steel & weathergroove smooth 150mm wall cladding
- Fly screens to all windows
- Cedar shiplap feature wall cladding

Features

- Bedroom loft with queen size mattress space
- Space to mount TV in lounge area
- Bi-fold window with breakfast bar
- Tasmanian Oak benchtop
- Upholstered daybed with storage
- Staircase storage to loft area
- Room for washing machine
- Study nook

Kitchen

- Two burner induction hot plate
- American Oak timber bench top
- Standard chrome tapware
- White kitchen cabinetry
- Bosch electric oven
- Rangehood
- Fisher & Paykel draw dishwasher
- Soft close drawers and doors

Bathroom

- Full size walk-in shower
- Wall hung vanity
- Standard chrome tapware
- Tiles to floor and wet areas
- Back to wall toilet suite

Electrical

- Mitsubishi 3.5kw Split System
- TV & ariel point
- Bathroom exhaust fan
- Double power points
- 16ltr gas hot water system
- Safety switchboard
- Dual gas regulator
- Power inlet 15AMP
- External up-down lights
- Internal up-down lights
- LED downlights
- USB power points
- Smoke detector
- 2 way light switches
- Water inlet





ICONIC
TINY HOMES

CONTACT US

📞 0433 590 390

📍 515 Cooper Street, Campbellfield VIC

✉️ admin@iconictinyhomes.com.au

📘 Iconic Tiny Homes

📷 @iconictinyhomes

🌐 iconictinyhomes.com.au



*View the Tiny
Home Range!*

