

JABIRU



ICONICTINYHOMES.COM.AU



THE JABIRU

Designed For Simplicity And Functionality

Sleeps

x2 Queen Beds

Dimensions

10.3m Length
2.4m Width
4.3m Height

Price Guide

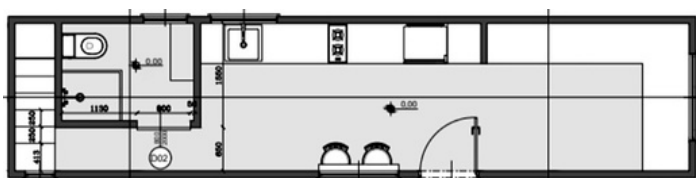
\$170,000

Build Time

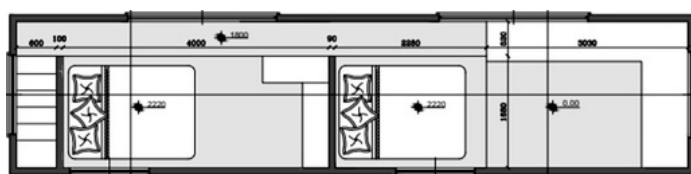
6-8 weeks

In the Jabiru, you can find all the modern comforts that you would normally find in your own home. Jabiru is suitable for singles, couples and even families with children.

Ground Floor



Loft Floor





FEATURES



Structure

- Quad-Axle 10.3m x 2.4m trailer with stabilisers and electric brakes. Rated to 6 Ton
- Trucore engineered Steel Frame
- Structaflor yellow tongue + underfloor insulation
- Earthwool R-2.5 sound shield insulation

External

- Colorbond steel wall cladding
- Aluminum low E-Glass doors and windows
- Flyscreens to all windows
- Colorbond steel roof cladding

Internal

- Easycraft EasyVJ MDF lining to walls and ceiling
- Oak timber laminate flooring
- Fully painted. Dulux White on White
- Tasmanian Oak slat feature wall

Features

- Large void style open living space
- Wardrobe space in master suite
- Feature windows in lounge area with 360 views
- Dual Loft to suit x2 queen size mattress
- Lounge room to suit large L shape sofa

Kitchen

- Breakfast bar with bifold window
- Two burner induction hot plate
- American oak timber benchtop
- White kitchen cabinetry
- Standard chrome tapware
- Soft close drawers and doors
- Fisher and Paykel dishwasher
- Bosch electric oven

Bathroom

- Tiles to floor and wet areas
- Back to wall toilet suite
- Full size tiled shower
- Wall hung vanity
- Built in understair storage space
- Standard chrome tapware
- Space for washing machine

Electrical

- 3.5kw Mitsubishi split system
- Bathroom exhaust fan
- External up-down lights
- Double power points
- LED downlights
- USB power points
- TV & Ariel point
- Smoke detector
- 16Ltr Gas hot water system
- Internal feature light
- Power Inlet 15 AMP
- Safety Switchboard
- Dual gas regulator
- LED Strip lighting
- Water Inlet
- Kitchen exhaust fan



ICONIC
TINY HOMES

CONTACT US

📞 0433 590 390

📍 515 Cooper Street, Campbellfield VIC

✉️ admin@iconictinyhomes.com.au

📘 Iconic Tiny Homes

📷 @iconictinyhomes

🌐 iconictinyhomes.com.au



*View the Tiny
Home Range!*

