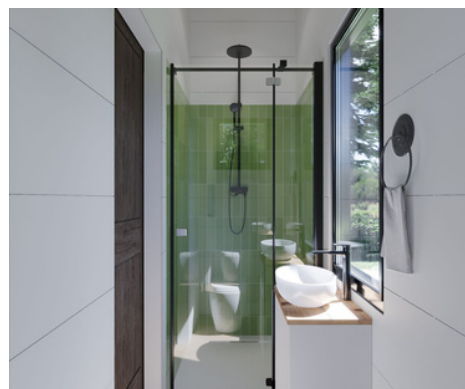


Loft Floor



FEATURES

Structure

- Tri-Axle 6.4m X 2.4m trailer with stabilisers and electric brakes rated to 3.5 ton
- Trucore engineered steel frame
- STRUCTAFLOOR yellow tongue + underfloor insulation
- Earthwool R-2.5 sound shield Insulation

Internal

- Easycraft lining boards to walls and ceiling
- Hybrid timber laminate flooring
- Fully painted, Dulux White on White

External

- Colorbond steel sureclad wall cladding
- Colorbond steel sureclad roof cladding
- Aluminium low E-Glass doors and windows
- Flyscreens to all windows

Features

- Bedroom loft with queen size mattress space
- Breakfast bar with bi-fold window
- Staircase storage
- Large upholstered daybed

Kitchen

- American Oak timber bench top
- Standard chrome tapware
- Westinghouse two burner cooktop
- White kitchen cabinetry
- Bosch electric built-in oven
- Slide out rangehood
- Soft close drawers and doors
- Yabby chrome tapware

Bathroom

- 900mm x 900mm tiled shower
- Floor mount vanity
- Standard chrome tapware
- Hybrid laminate timber flooring
- Back to wall toilet suite

Electrical

- Bathroom exhaust fan
- External up-down lights
- Double power points
- LED down lights
- Dual gas regulator
- Water inlet
- Mitsubishi 3.5kw split system
- TV & Ariel point
- Smoke detector
- 16ltr gas hot water system
- Safety switchboard
- Power inlet 15 AMP



THE KAKADU 2.0

The Kakadu 2.0 has been designed with a simple open plan making it the ideal guest accommodation or Airbnb rental. Spacious in-size with a queen size mattress space sleeping up to 2 people



Sleeps 1-2
x1 Queen Bed



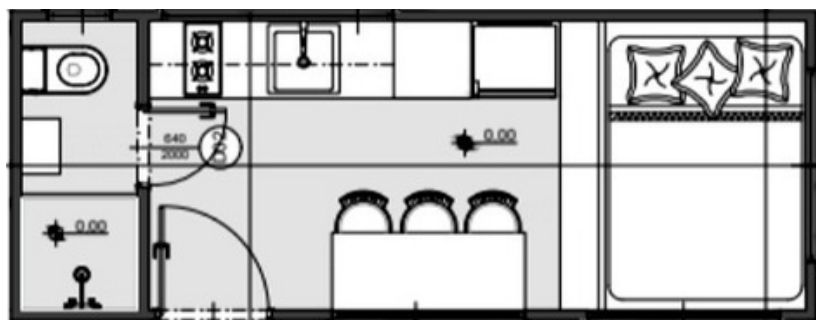
Dimensions
6.5m Length
2.4m Width
3.0m Height



Price Guide
Starting price
\$95,000



Delivery
POA



Ground Floor



Structure

- Tri-Axle 6.4m x 2.4m trailer with stabilisers and electric brakes. Rated to 3.5 ton
- Trucore engineered steel frame
- Structaflor yellow tongue + underfloor insulation
- Earthwool R-2.5 sound shield insulation

Internal

- Fully painted, Dulux White on White
- Hybrid timber laminate flooring
- Easycraft lining boards to walls and ceiling

External

- Colorbond steel sureclad wall cladding
- Aluminum low E-Glass doors and windows
- Flyscreens to all windows
- Colorbond steel sureclad roof cladding

Features

- 1 x Queen size ground level bedroom
- Airbnb style single level tiny home

Kitchen

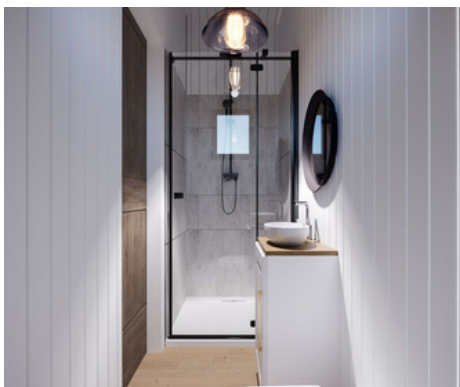
- Westinghouse two burner cooktop
- American Oak timber benchtop
- Soft close drawers and doors
- Breakast bar with bi-fold window
- Yabby chrome tapware
- Bosch electric built-in oven
- White kitchen cabinetry

Bathroom

- Floor mount vanity
- Tiles to floor and wet areas
- Back to wall toilet suite
- 900mm x 900mm tiled shower
- Yabby chrome tapware

Electrical

- TV & Ariel point
- Smoke detector
- Water Inlet
- Power inlet 15 AMP
- Safety switchboard
- Dual gas regulator
- Bathroom exhaust fan
- 16Ltr gas hot water system
- External up-down lights
- Double power points
- LED down lights
- 3.5kw Mitsubishi split system





THE ARNHEM

The Arnhem is a spacious home that is designed with a high gable roofline over the kitchen and living area, creating a beautiful, bright open space. This single loft tiny house can sleep 1-4 people with the option to have a sofa-bed within the lounge area.



Sleeps 1-4

x1 Queen bed
x1 Daybed



Dimensions

8.4m Length
2.4m Length
4.3m Height



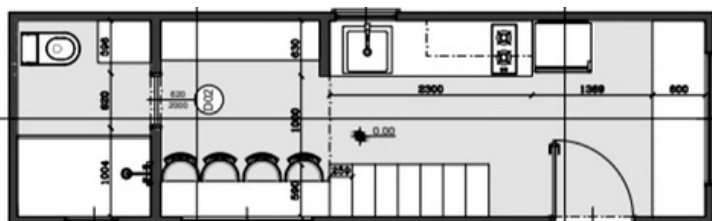
Price Guide

Starting price
\$135,000

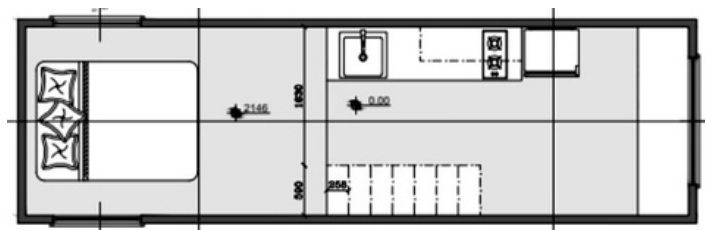


Delivery

POA



Ground Floor



Loft Floor



Scan for a
Virtual Tour!



FEATURES

Structure

- Tri-Axle 8.4m X 2.4m trailer with stabilisers and electric brakes rated to 4.5 ton
- Trucore engineered steel frame
- STRUCTAFLOOR yellow tongue + underfloor insulation
- Earthwool R-2.5 sound shield insulation

Internal

- Easycraft lining boards to walls and ceiling
- Oak timber laminate flooring
- Porta timber feature wall in loft and living area
- Fully painted, Dulux White on White

External

- Colorbond steel sureclad roof cladding
- Aluminium low E-Glass doors & windows
- Colorbond steel sureclad wall cladding
- Fly screens to all windows
- Cedar shiplap feature wall cladding

Features

- Single loft with queen size mattress space
- Space to mount TV in lounge area
- Bi-fold window with breakfast bar
- Upholstered daybed with storage
- Staircase storage to loft area

Kitchen

- Westinghouse two burner cooktop
- American Oak timber bench top
- Yabby chrome tapware
- White kitchen cabinetry
- Bosch electric built-in oven
- Slide out rangehood
- Fisher & Paykel draw dishwasher
- Soft close drawers and doors

Bathroom

- 900mm x 900mm tiled shower
- Standard chrome tapware
- Built-in vanity with washing machine space
- Tiles to floor area
- Back to wall toilet suite

Electrical

- Mitsubishi 3.5kw Split System
- TV & ariel point
- Bathroom exhaust fan
- Double power points
- 16ltr gas hot water system
- Safety switchboard
- Dual gas regulator
- External up-down lights
- Internal up-down lights
- LED downlights
- Smoke detector
- 2 way light switches
- Water inlet
- Power inlet 15AMP





THE DUNDEE

The Dundee tiny house is one of our larger tiny homes featuring a unique second level dual loft. The comfy yet private layout features a large kitchen bench top merging into a breakfast bar and ample storage throughout. With plenty of space and the ability to sleep up to 5 people the Dundee would perfectly suit singles, couples or Airbnb rentals.



Sleeps 1-5

x2 Queen bed
x1 Daybed



Dimensions

8.4m Length
2.4m Length
4.3m Height



Price Guide

Starting price
\$165,000

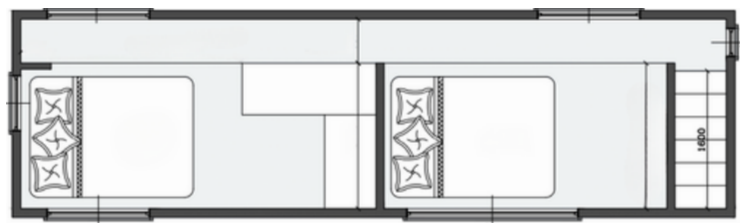


Delivery

POA



Ground Floor



Loft Floor



Scan for a
Virtual Tour!



FEATURES



Structure

- Tri-Axle 8.4 x2.4m trailer with stabilisers & electric brakes rated to 4.5 ton
- TruCore engineered steel frame
- STRUCTAFLOOR yellow tongue + underfloor insulation
- Earthwool R-2.5 sound shield insulation

External

- Colorbond steel roof cladding
- Colorbond steel wall cladding
- Aluminium low E-Glass doors and windows
- Cedar Shiplap feature wall cladding
- Flyscreens to all windows



Internal

- Easycraft lining boards to walls and ceiling
- Hybrid timber laminate flooring
- Fully painted, Dulux White on White

Features

- Dual loft with wardrobe space
- Staircase storage to loft area
- Upholstered daybed with storage
- Space to mount TV in lounge area
- Study nook with American Oak benchtop



Kitchen

- White kitchen cabinetry
- American Oak timber bench top
- Breakfast bar with bi-fold window
- Yabby chrome tapware
- Westinghouse two burner cook top
- Bosch electric built-in oven
- Fisher & Paykel draw dishwasher
- Soft close drawers and doors

Bathroom

- Wall hung vanity
- Waterfall benchtop with washing machine space
- 900mm x 900mm tiled shower
- Back to wall toilet suite
- Yabby chrome tapware



Electrical

- External up-down lights
- Feature wall light
- Mitsubishi 3.5kw split system
- 16ltr gas hot water system
- TV & ariel point
- Dual gas regulator
- Kitchen exhaust fan
- LED downlights
- Double power points
- Safety switchboard
- Water inlet
- Smoke detector
- Power inlet 15AMP
- Bathroom exhaust fan



Scan for a
Virtual Tour!



Structure

- Tri-Axle 10.3m x 2.4m trailer with stabilisers and electric brakes.
- Rated to 4.5 Ton
- Trucore engineered Steel Frame
- Structaflor yellow tongue + underfloor insulation
- Earthwool R-2.5 sound shield insulation

External

- Colorbond steel sureclad wall cladding
- Aluminum low E-Glass doors and windows
- Flyscreens to all windows
- Colorbond steel sureclad roof cladding
- Cedar shiplap feature wall cladding

Internal

- Easycraft lining boards to walls and ceiling
- Oak timber laminate flooring
- Fully painted. Dulux White on White
- Tasmanian Oak slat feature wall

Features

- Large void style open living space
- Wardrobe space in master suite
- Feature windows in lounge area
- Dual Loft to suit x2 queen size mattress
- Lounge room to suit large sofa

Kitchen

- Breakfast bar with bifold window
- Westinghouse two burner cook top
- American oak timber benchtop
- White kitchen cabinetry
- Yabby chrome tapware
- Soft close drawers and doors
- Fisher and Paykel dishwasher
- Bosch electric oven

Bathroom

- Tiles to floor and wet areas
- Back to wall toilet suite
- 900mm x 900mm tiled shower
- Wall hung vanity
- Built in understair storage space
- Yabby chrome tapware
- Space for washing machine

Electrical

- 3.5kw Mitsubishi split system
- Bathroom exhaust fan
- External up-down lights
- Double power points
- LED downlights
- TV & Ariel point
- Smoke detector
- 16Ltr Gas hot water system
- Internal feature light
- Power Inlet 15 AMP
- Safety Switchboard
- Dual gas regulator
- Water Inlet
- Kitchen exhaust fan





THE DALY

The Daly is a spacious ground level tiny home designed with plenty of room to move. A simple open plan featuring a spacious kitchen and living area. Queen size bedroom with built in robes and a generous size bathroom including washing machine space. Perfect as an alternative to a traditional granny flat.



Sleeps 1-4

x1 Queen Bed
x1 Sofa Bed
(Optional)



Dimensions

9.0m Length
2.4m Length
3.0m Height



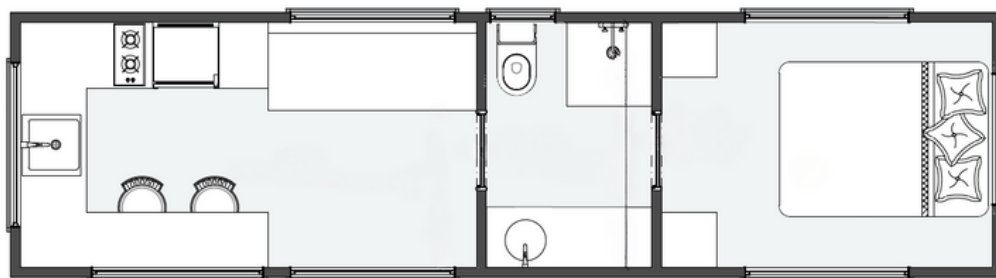
Price Guide

Starting price
\$125,000



Delivery

POA



Ground Floor



FEATURES

Structure

- Tri-Axle 9.0m x 2.4m trailer with stabilisers and electric brakes.
- Rated to 4.5 TON
- Trucore engineered Steel Frame
- Structaflor yellow tongue + underfloor insulation
- Earthwool R-2.5 sound shield insulation

External

- Colorbond steel sureclad wall cladding
- Aluminum low E-Glass doors and windows
- Flyscreens to all windows
- Colorbond steel sureclad roof cladding
- Cedar shiplap feature wall cladding

Internal

- Easycraft lining boards to walls and ceiling
- Fully painted. Dulux White on White
- Hybrid timber laminate flooring

Features

- Spacious kitchen with breakfast bar
- Single level tiny home
- Built in bedroom wardrobes

Kitchen

- Breakfast bar with bifold window
- Westinghouse two burner cooktop
- American oak timber benchtop
- White kitchen cabinetry
- Yabby chrome tapware
- Soft close drawers and doors
- Fisher and Paykel dishwasher
- Bosch electric built-in oven
- Slide out rangehood

Bathroom

- Hybrid timber laminate flooring
- 900mm x 900mm tiled shower
- Built in vanity with washing machine space
- Yabby chrome tapware
- Back to wall toilet suite

Electrical

- 3.5kw Mitsubishi split system
- Bathroom exhaust fan
- External up-down lights
- Double power points
- LED downlights
- TV & Ariel point
- Smoke detector
- 16Ltr Gas hot water system
- Internal feature light
- Power Inlet 15 AMP
- Safety Switchboard
- Dual gas regulator
- Water Inlet



THE KING ASH

The King Ash is an extraordinary design that can be tailored to meet the specific needs of each client. It features a secondary loft that can double as a third bedroom or a recreational area – perfect for families seeking extra living space.

The functional kitchen comes with all built-in appliances and breakfast bar dining. The ground level bedroom includes a built-in robe and a study nook, providing an ideal workspace or storage area. Experience the best of tiny house living with the King Ash.



Sleeps 1-6

x2 Queen bed
x1 Single Bed
x1 Sofa bed



Dimensions

10m Length
2.4m Length
4.3m Height



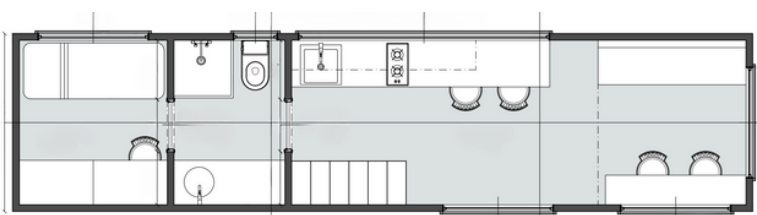
Price Guide

Starting price
\$160,000

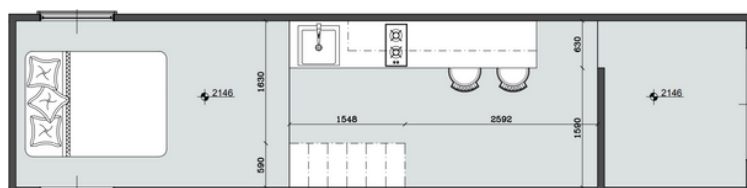


Delivery

POA



Ground Floor



Loft Floor



Structure

- Tri-Axle 10.m x 2.4m trailer with stabilisers and electric brakes. Rated to 4.5 Ton
- Trucore engineered Steel Frame
- Structaflor yellow tongue + underfloor insulation
- Earthwool R-2.5 sound shield insulation

External

- Colorbond Sureclad steel wall cladding
- Aluminum low E-Glass doors and windows
- Flyscreens to all windows
- Colorbond Sureclad steel roof cladding
- Cedar shiplap feature wall cladding

Internal

- Easycraft MDF lining to walls and ceiling
- Hybrid timber laminate flooring
- Fully painted. Dulux White on White
- Tasmanian Oak slat feature wall
- Porta timber feature wall in living and loft bedroom

Features

- Extra living space accessed by ladder
- Kitchen with a spacious gable roof design
- Under stair storage
- Study nook and wardrobe space

Kitchen

- Breakfast bar dining
- Westinghouse two burner cooktop
- American oak timber benchtop
- White kitchen cabinetry and pantry
- Under-stair built-in fridge space
- Yabby chrome tapware
- Soft close drawers and doors
- Fisher and Paykel dishwasher
- Bosch electric built-in oven

Bathroom

- Hybrid laminate timber flooring
- 900mm x 900mm tiled shower
- Built-in vanity with washing machine space
- Yabby chrome tapware
- Back to wall toilet suite

Electrical

- 3.5kw Mitsubishi split system
- Bathroom exhaust fan
- External up-down lights
- Double power points
- LED downlights
- TV & Ariel point
- Smoke detector
- 16Ltr Gas hot water system
- Internal feature light
- Power Inlet 15 AMP
- Safety Switchboard
- Dual gas regulator
- Water Inlet





CONTACT US

☎ 0459 838 130

📍 515 Cooper Street, Campbellfield VIC

✉ admin@iconictinyhomes.com.au

📘 Iconic Tiny Homes

📷 @iconictinyhomes

🌐 iconictinyhomes.com.au



*View the Tiny
Home Range!*

