



# THE JABIRU

The Jabiru design is the largest model we have available. With a generously sized kitchen and large void style living area the Jabiru is the ultimate family friendly tiny house. The breakfast bar including a bifold window is the perfect addition to the kitchen for a separate dining area or workspace. Complete with a private dual loft sleeping up to 6 people this tiny house is truly one to enjoy.



## Sleeps 1-6

x2 Queen bed  
x1 Sofa bed  
(optional)



## Dimensions

10.3m Length  
2.4m Length  
4.3m Height



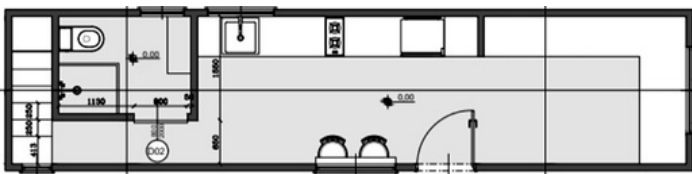
## Price Guide

Starting price  
\$200,000



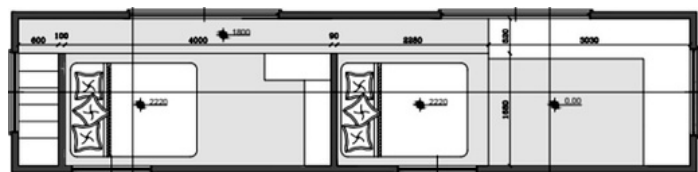
## Delivery

POA



Ground Floor

Loft Floor



Scan for a  
Virtual Tour!



# FEATURES

## Structure

- Tri-Axle 10.3m x 2.4m trailer with stabilisers and electric brakes.
- Rated to 4.5 Ton
- Trucore engineered Steel Frame
- Structaflor yellow tongue + underfloor insulation
- Earthwool R-2.5 sound shield insulation

## External

- Colorbond steel sureclad wall cladding
- Aluminum low E-Glass doors and windows
- Flyscreens to all windows
- Colorbond steel sureclad roof cladding
- Cedar shiplap feature wall cladding

## Internal

- Easycraft lining boards to walls and ceiling
- Oak timber laminate flooring
- Fully painted. Dulux White on White
- Tasmanian Oak slat feature wall

## Features

- Large void style open living space
- Wardrobe space in master suite
- Feature windows in lounge area
- Dual Loft to suit x2
- Queen size mattress
- Lounge room to suit large sofa

## Kitchen

- Breakfast bar with bifold window
- Fisher & Paykel two burner cooktop
- American oak timber benchtop
- White kitchen cabinetry
- ABI Chrome tapware
- Soft close drawers and doors
- Fisher and Paykel dishwasher
- Bosch electric oven

## Bathroom

- Tiles to floor and wet areas
- Back to wall toilet suite
- 900mm x 900mm tiled shower
- Wall hung vanity
- Built in under stair storage
- ABI chrome tapware
- Space for washing machine

## Electrical

- 3.5kw Mitsubishi split system
- Bathroom exhaust fan
- External up-down lights
- Double power points
- LED downlights
- TV & Ariel point
- Smoke detector
- 16Ltr Gas hot water system
- Internal feature light
- Power Inlet 15 AMP
- Safety Switchboard
- Dual gas regulator
- Water Inlet
- Kitchen exhaust fan

