



# THE MARRAKAI

The Marakai is a luxurious single-story tiny home featuring a high-pitched gable roofline that creates a stunning, bright, and spacious living area.

With a generous bathroom highlighted by a large feature window that floods the space with natural light, this roomy single-story model is ideal for families as a permanent residence or long-term guest accommodation.

As our largest design, this home offers a three-meter-wide layout for added comfort and space.



## Sleeps 1-4

x1 Queen bed  
x1 Sofa bed  
(optional)



## Dimensions

10.5m Length  
3.0m Length  
4.3m Height



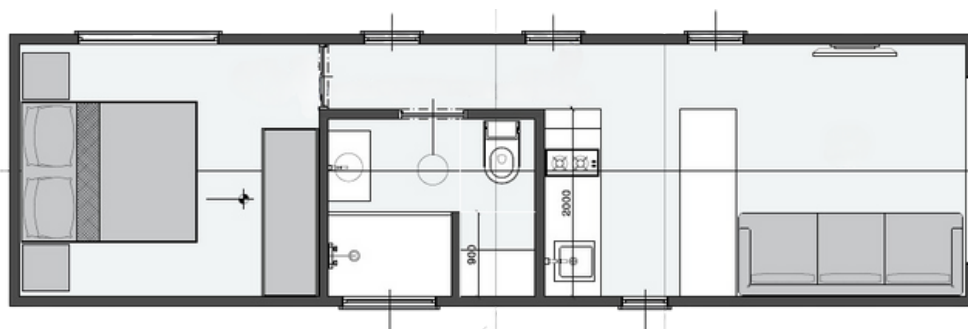
## Price Guide

Starting price  
\$145,000



## Delivery

POA



## Ground Floor





# FEATURES

## Structure

- Tri-Axle 10.5m x 3.0m trailer with stabilisers and electric brakes. Rated to 4.5 Ton
- Trucore engineered Steel Frame
- Structaflor yellow tongue + underfloor insulation
- Earthwool R-2.5 sound shield insulation

## External

- Colorbond Sureclad steel wall cladding
- Aluminum low E-Glass doors and windows
- Flyscreens to all windows
- Colorbond Sureclad steel roof cladding
- Cedar shiplap feature wall cladding

## Internal

- Easycraft MDF lining to walls and ceiling
- Hybrid timber laminate flooring
- Fully painted. Dulux White on White
- Porta timber feature bed head in bedroom

## Features

- Spacious three metre wide layout
- Built in bedroom wardrobe
- Queen size mattress space
- Designer kitchen with island bench

## Kitchen

- Fisher & Paykel two burner cooktop
- Xenolith kitchen benchtop
- Black Matte kitchen cabinetry
- ABI Brushed brass tapware
- Soft close drawers and doors
- Fisher and Paykel dishwasher
- Bosch electric built-in oven

## Bathroom

- Hybrid timber laminate flooring
- 1350mm x 900mm tiled shower
- Wall hung vanity
- ABI brushed brass tapware
- Back to wall toilet suite

## Electrical

- 3.5kw Mitsubishi split system
- Bathroom exhaust fan
- External up-down lights
- Double power points
- LED downlights
- TV & Ariel point
- Smoke detector
- 16Ltr Gas hot water system
- Internal feature light
- Power Inlet 15 AMP
- Safety Switchboard
- Dual gas regulator
- Water Inlet
- Ceiling fan

